



Liskeard Hillfort
Primary School

NEWSLETTER



Monday 24th February 2020

Old Road, Liskeard, Cornwall PL14 6HZ

Tel: 01579 343443

Email: admin@liskeardhillfortprimary.org.uk

Website: www.liskeardhillfortprimary.org.uk

Principal: Dr Tim Cook

Parking

Please could we remind parents and carers to respect our neighbours when dropping off your children or collecting them at the end of the day. We have received complaints that cars have been blocking driveways owned by local residents and also parking unsafely. We have parking permits available for FREE in reception which allow one hours free parking at the beginning of the day and one hours free parking at the end of the day in Westbourne car-park. Please pop into reception if you would like one.

Breakfast Club

From 24th February 2020 the charging structure for Breakfast club will be changing. There will be only one price of £2.50 and this will allow all children to attend from 7.30am onwards. We have not had a price increase for breakfast club for over 6 years so we are sure you understand that with the cost of food and staffing rising an increase in cost is required.

We have moved breakfast club to being booked online to bring it in line with Wraparound. This means that Breakfast club will be payable at the time of booking. If you qualify for free breakfast club you are still required to book your child's place online, please book under Pupil Premium Breakfast Club.

Car Park

Thank you for your cooperation with the new car park arrangements. Please ensure under **no circumstances** the exit gate is used for entry to the car park. We would also like to remind all parents/carers not to park across the entry gate at all. Access may be required at any time by the emergency services.

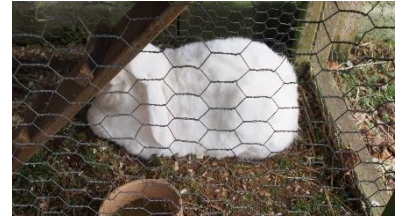
Attendance

Week 10/02/2020 – 14/02/2020			
Each week the class with the highest attendance from KS1 gets to look after CJ Bear from Commando Joe or the trophy for those in Key Stage 2. The highest overall class will receive a class treat. We aim to achieve greater than 96% each week which is the national and county attendance target.			
RAH	96.55%	RSE	97.24%
1KB	96.96%	1TL	95.17%
2NB	90.38%	2SW	98.15%
3CC	94.34%	3ML	95.92%
4PE	96.22%	4SM	97.13%
5DW	96.31%	5JF	98.3%
6ET	98.92%	6VM	96.8%
This week's KS1 winner with 98.15% are 2SW			
This week's KS2 winner with 98.92% are 6ET			
Overall attendance 96.32%			

Thank you



Thank you to Jan & Erin for taking very good care of our two bunnies, Ant & Dec during the half term break. Would your family be willing to offer our bunnies a home during the Easter break? If this is something you could do please pop in to reception and let us know!



Diary Dates

Thursday 27 th February	Year 3 Visit to Kents Cavern
Tuesday 17 th March	Year 6 Leavers & Class Photos
Wednesday 18 th March	IEP Meetings
Tuesday 24 th March	Parents Evening 3:30pm – 6:30pm
Wednesday 25 th March	Parents Evening 4pm – 7pm
Monday 30 th March – Monday 13 th April	Easter Holiday
Thursday 16 th – Friday 17 th April	Year 2 Residential to Eden
Monday 4 th May – Thursday 7 th May	Year 5 Residential to Okehampton
Friday 8 th May	Bank Holiday
Wednesday 13 th May – Friday 15 th May	Year 4 Residential to Delaware
Monday 25 th May – Friday 29 th May	Half Term
Tuesday 30 th June – Friday 3 rd July	Year 6 Residential to Bristol
Monday 6 th July – Friday 10 th July	Year 6 Activity week
Thursday 23 rd July	Inset Day
Thursday 3 rd September	Inset Day
Friday 4 th September	Inset Day
Monday 26 th October- Friday 30 th October	Half Term
Monday 2 nd November	Inset Day